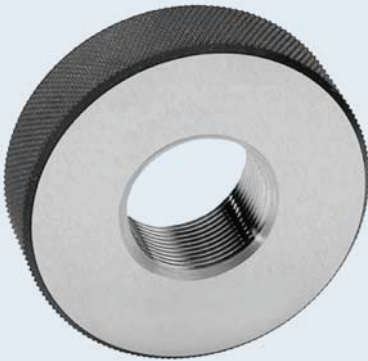


### Gewinde-Lehrringe "GUT"

- Für metrisches ISO-Regelgewinde, rechts
- Norm DIN 13, 6g
- Aus gehärtetem Lehrenstahl

### Thread ring gauges "GO"

- For ISO-metric coarse, right
- DIN 13, 6g
- Hardened tool steel



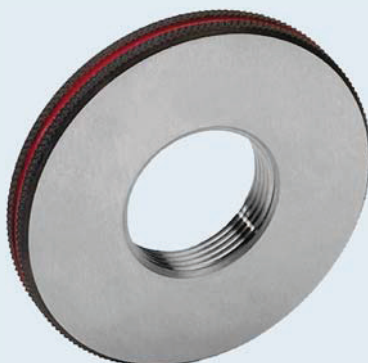
| Bestell-Nr.<br>Order no. | Nennmaß<br>Size M | Bestell-Nr.<br>Order no. | Nennmaß<br>Size M |
|--------------------------|-------------------|--------------------------|-------------------|
| 6301-1005                | M 2 x 0.4         | 6301-1080                | M 18 x 2.5        |
| 6301-1010                | M 2.5 x 0.45      | 6301-1085                | M 20 x 2.5        |
| 6301-1015                | M 3 x 0.5         | 6301-1090                | M 22 x 2.5        |
| 6301-1020                | M 3.5 x 0.6       | 6301-1095                | M 24 x 3          |
| 6301-1025                | M 4 x 0.7         | 6301-1100                | M 27 x 3          |
| 6301-1030                | M 5 x 0.8         | 6301-1105                | M 30 x 3.5        |
| 6301-1035                | M 6 x 1           | 6301-1110                | M 33 x 3.5        |
| 6301-1040                | M 7 x 1           | 6301-1115                | M 36 x 4          |
| 6301-1045                | M 8 x 1.25        | 6301-1120                | M 39 x 4          |
| 6301-1050                | M 9 x 1.25        | 6301-1125                | M 42 x 4.5        |
| 6301-1055                | M 10 x 1.5        | 6301-1130                | M 45 x 4.5        |
| 6301-1060                | M 11 x 1.5        | 6301-1135                | M 48 x 5          |
| 6301-1065                | M 12 x 1.75       | 6301-1140                | M 52 x 5          |
| 6301-1070                | M 14 x 2          | 6301-1145                | M 56 x 5.5        |
| 6301-1075                | M 16 x 2          | 6301-1150                | M 60 x 5.5        |

### Gewinde-Lehrringe "AUSSCHUSS"

- Für metrisches ISO-Regelgewinde, rechts
- Norm DIN 13, 6g
- Aus gehärtetem Lehrenstahl

### Thread ring gauges "NO GO"

- For ISO-metric coarse, right
- DIN 13, 6g
- Hardened tool steel



| Bestell-Nr.<br>Order no. | Nennmaß<br>Size M | Bestell-Nr.<br>Order no. | Nennmaß<br>Size M |
|--------------------------|-------------------|--------------------------|-------------------|
| 6301-2005                | M 2 x 0.4         | 6301-2080                | M 18 x 2.5        |
| 6301-2010                | M 2.5 x 0.45      | 6301-2085                | M 20 x 2.5        |
| 6301-2015                | M 3 x 0.5         | 6301-2090                | M 22 x 2.5        |
| 6301-2020                | M 3.5 x 0.6       | 6301-2095                | M 24 x 3          |
| 6301-2025                | M 4 x 0.7         | 6301-2100                | M 27 x 3          |
| 6301-2030                | M 5 x 0.8         | 6301-2105                | M 30 x 3.5        |
| 6301-2035                | M 6 x 1           | 6301-2110                | M 33 x 3.5        |
| 6301-2040                | M 7 x 1           | 6301-2115                | M 36 x 4          |
| 6301-2045                | M 8 x 1.25        | 6301-2120                | M 39 x 4          |
| 6301-2050                | M 9 x 1.25        | 6301-2125                | M 42 x 4.5        |
| 6301-2055                | M 10 x 1.5        | 6301-2130                | M 45 x 4.5        |
| 6301-2060                | M 11 x 1.5        | 6301-2135                | M 48 x 5          |
| 6301-2065                | M 12 x 1.75       | 6301-2140                | M 52 x 5          |
| 6301-2070                | M 14 x 2          | 6301-2145                | M 56 x 5.5        |
| 6301-2075                | M 16 x 2          | 6301-2150                | M 60 x 5.5        |

### Grenzgewinde-Lehrdorne DIN 13

- Für Whitworth-Rohrgewinde, Rechtsgewinde
- GUT- und AUSSCHUSS
- Norm DIN ISO 228
- Aus gehärtetem Lehenstahl

### Thread plug gauges DIN 13

- For Whitworth pipe thread, right
- "GO" and "NO GO"
- DIN ISO 228
- Hardened tool steel



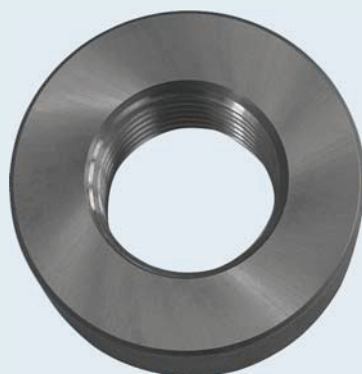
| Bestell-Nr.<br>Order no. | Nennmaß<br>Size M | Bestell-Nr.<br>Order no. | Nennmaß<br>Size M |
|--------------------------|-------------------|--------------------------|-------------------|
| 6401-5005                | G 1/8"            | 6401-5035                | G 7/8"            |
| 6401-5010                | G 1/4"            | 6401-5040                | G 1"              |
| 6401-5015                | G 3/8"            | 6401-5045                | G 1 1/4"          |
| 6401-5020                | G 1/2"            | 6401-5050                | G 1 1/2"          |
| 6401-5025                | G 5/8"            | 6401-5055                | G 1 3/4"          |
| 6401-5030                | G 3/4"            | 6401-5060                | G 2"              |

### Gewinde-Lehrringe DIN 13 "GUT"

- Für Whitworth-Rohrgewinde, rechts, GUT
- Norm DIN ISO 228
- Aus gehärtetem Lehenstahl

### Thread ring gauges DIN 13 "GO"

- For Whitworth pipe thread, right
- DIN ISO 228
- Hardened tool steel



| Bestell-Nr.<br>Order no. | Nennmaß<br>Size M |
|--------------------------|-------------------|
| 6301-5005                | G 1/8"            |
| 6301-5010                | G 1/4"            |
| 6301-5015                | G 3/8"            |
| 6301-5020                | G 1/2"            |
| 6301-5025                | G 5/8"            |
| 6301-5030                | G 3/4"            |
| 6301-5035                | G 7/8"            |
| 6301-5040                | G 1"              |
| 6301-5045                | G 1 1/4"          |
| 6301-5050                | G 1 1/2"          |
| 6301-5055                | G 1 3/4"          |
| 6301-5060                | G 2"              |

**Grenzwinde-Lehrdorne Satz  
DIN 13**

- Aus gehärtetem Lehenstahl
- Für metrisches ISO-Regelgewinde, rechts
- GUT- und AUSSCHUSS
- Norm DIN 13, 6H

**Thread plug gauges set  
DIN 13**

- Hardened tool steel
- For ISO standard metric thread, right
- "GO" and "NO GO"
- DIN 13, 6H



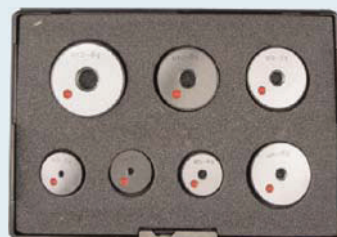
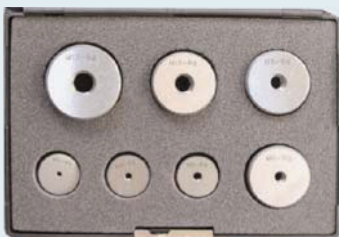
| Bestell-Nr.<br>Order no. | Satz<br>Set | Nennmaß<br>Size M          |
|--------------------------|-------------|----------------------------|
| 6151-1000                | 7           | M 3, 4, 5, 6, 7, 8, 10, 12 |

**Grenzwinde-Lehrring Satz  
DIN 13**

- Aus gehärtetem Lehenstahl
- Für metrisches ISO-Regelgewinde, rechts
- Norm DIN 13, 6g

**Thread gauges ring set  
DIN 13**

- Hardened tool steel
- For ISO standard metric thread, right
- DIN 13, 6g



| Bestell-Nr.<br>Order no. | Art<br>Sort       | Satz<br>Set | Nennmaß<br>Size M          |
|--------------------------|-------------------|-------------|----------------------------|
| 6151-2000                | GUT / GO          | 7           | M 3, 4, 5, 6, 7, 8, 10, 12 |
| 6151-2010                | Ausschuss / NO GO | 7           | M 3, 4, 5, 6, 7, 8, 10, 12 |

**Grenzlehrdorne Satz DIN 2245**

- Aus gehärtetem Lehenstahl
- Passung H 7, GUT- und AUSSCHUSS

**Limit plug gauges set DIN 2245**

- Hardened tool steel
- Tolerance H 7, "GO" and "NO GO"



| Bestell-Nr.<br>Order no. | Satz<br>Set | Nennmaß<br>Size M          |
|--------------------------|-------------|----------------------------|
| 6151-3000                | 7           | M 3, 4, 5, 6, 7, 8, 10, 12 |